



BUILT TO LAST

Makers of Commercial Dish and Glasswashers

PROUDLY AUSTRALIAN MADE

— Since 1954 —

Norris Controller

Service Manual

Damien Berry

10/5/2016

Contents

Revisions: 2

Introduction: 0

Navigation: 0

Errors:..... 0

System Configuration:..... 1

User Configuration: 5

Machine Info: 10

Upgrading Boards Firmware: 0

..... 0

Revisions:

<u>REV #</u>	<u>Description:</u>	<u>By:</u>	<u>Date:</u>
1	Initial Release	Damien	
2			
3			
4			
5			
6			
7			

Introduction:

Navigation:

Below is a table outlining the different button combinations & what they do.

<u>Operation</u>	<u>Buttons to Press</u>	<u>Type & Duration</u>	<u>What will happen?</u>
Turn Machine ON	B1	Press & Hold 5 Seconds	Machine will turn on
Select Cycle	B2	Press	Cycle Will Change
Start Cycle	B3	Press	Cycle Will Start
Turn Machine OFF "shutdown"	B1	Press & Hold 3 Seconds	Machine Will shut down then turn OFF
Machine Info	B3	Press & Hold	Will display machine information, time, serial number, cycle count.
Enter Configuration Menu (machine must be OFF)	B2 & B3	Press, Hold (5 Seconds) & Release	On release screen will turn ON and be in Configuration Menu
Scroll	B2	Press	Will Scroll through options
Select	B3	Press	Will either "set" or turn on/off component
Exit Configuration Screen	B2 & B3	Press, Hold (5 Seconds) & Release	Will turn machine OFF
Adjust parameters (machine must be ON)	B2, & B3	Press, Hold (5 Seconds) & Release	Will entre machine parameters
De-Scale Cycle	B2	Press & Hold	Will do de-scale cycle then shutdown

Errors:

Below is the list of errors that can appear on the display, and what can cause them to happen, the machine can be reset by press and holding the power button for 5 seconds

Error	Cause	Fix
Main Contact Failure	Digital input from "NO" on contactor not detected	Replace contactor
Rinse Fill Failure	Has taken longer than 3min to fill rinse tank	If poor water pressure, enable low water pressure setting No incoming water
Rinse Pump Failure	Has taken longer than 5min to fill the wash tank	Stem Pipe hasn't been installed Faulty rinse pump – replace pump Incorrect reading from Pressure sensor
Rinse Tank Water High	Rinse Tank has over filled	Faulty solenoid – replace solenoid Incorrect reading from pressure sensor
Rinse Tank Water Low	Rinse tank level has gone to low – element safety	If poor water pressure, enable low water pressure setting No incoming water
Rinse Tank Over Temp	Rinse tank has reached 95°C	Temp set to high Faulty Probe – replace probe Contactor won't turn off

Wash Tank Water High	Wash tank has overfilled	Blocked drain
		Faulty Drain pump – replace pump
Wash Tank Water Low	Wash tank level has gone to low – element safety	Stem Pipe not installed
		Leaking seal on stem pipe
		Incorrect signal from pressure sensor
Wash Tank Over Temp	Wash tank has reached 95°C	Faulty Probe – replace probe
		Contactors won't turn off
Drain Pump Failure	Has taken too long to reach low point on drain	Check for blockage in drain
		Faulty Drain pump – replace pump

System Configuration:

In the configuration screen you will be able to do the following: **NOTE: Ensure that the Door/Hood is closed or some components won't turn ON**

- Apply Default Parameters
- Zero Pressure Sensors
- Factory Test Mode:
 - Rinse Tank Elements (will only remain on for 5 seconds)
 - Wash Tank Elements (will only remain on for 5 seconds)
 - Rinse Pump
 - Solenoid (Hot)
 - Solenoid (Cold)
 - Wash Pump
 - Detergent Pump
 - Rinse Aid Pump
 - Drain Pump
- Drain Pump – enable/disable
- Low Water Pressure – enable/disable

DESCRIPTION

Off Screen:

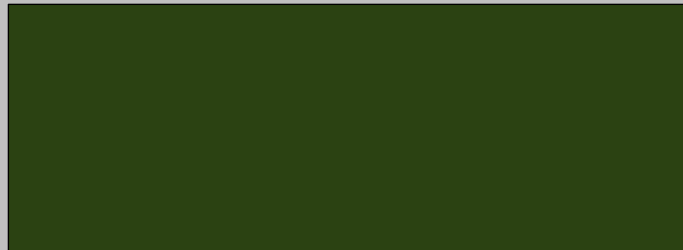
To turn access Configuration Menu, press and hold B2 & B3 for 5 seconds then release to turn screen ON.

B2 = Bottom Left "ACTION"
B3 = Bottom Right "ACTION"

Zero Water Levels:

This is to be done on install to take into account any atmospheric conditions.

SCREEN SELECTION SCROLLING



Apply Default Params
Confirm Action!

Cancel || Confirm

System Configuration
Zero Water Levels

Operate || Next

SCREEN AFTER SELECTION

System Configuration
Apply Default Params

Operate || Next

System Configuration
Apply Default Params
Saving Changes

System Configuration
Zero Rinse Tank
>>No Water in Tank<<
Operate || Next

System Configuration
Zero Wash Tank
>>No Water in Tank<<
Operate || Exit

Enable/Disable Drain Pump:

To enable/disable the use of a drain pump inside a machine.

System Configuration
Drain Installed
Disabled
Operate || Next

System Configuration
Drain Installed
Disabled
Operate || Next

System Configuration
Drain Installed
Enabled
Operate || Next

Factory Test Mode:

This section allows for the testing of each component inside the machine.

System Configuration
Factory Test Mode

Operate || Next

Factory Test Mode
Test Contactor:
OFF
Operate || Next

Factory Test Mode
Test Contactor:
ON
Operate || Next

Turn ON & OFF Rinse Elements:

Allows the rinse element operation to be tested.

NOTE: Elements will only stay on for 5 seconds.

Factory Test Mode
Test Rinse Heater:
OFF
Operate || Next

Factory Test Mode
Test Rinse Heater:
OFF
Operate || Next

Factory Test Mode
Test Rinse Heater:
ON
Operate || Next

Turn ON & OFF Wash Elements:

Allows the wash element operation to be tested.

NOTE: Elements will only stay on for 5 seconds.

Factory Test Mode
Test Wash Heater:
OFF
Operate || Next

Factory Test Mode
Test Wash Heater:
OFF
Operate || Next

Factory Test Mode
Test Wash Heater:
ON
Operate || Next

Factory Test Mode
Test Rinse Pump
OFF
Operate || Next

Factory Test Mode
Test Rinse Pump
OFF
Operate || Next

Factory Test Mode
Test Rinse Pump
ON
Operate || Next

Turn ON rinse solenoid:

Allows for testing of the rinse solenoid, (NOTE: (Rinse tank machines) This can fall outside of the normal operational levels required, to ensure no errors appear please use the Test Rinse Pump function to drain the rinse tank afterwards)

Factory Test Mode
Test Rinse Fill Sol
OFF
Operate || Next

Factory Test Mode
Test Rinse Fill Sol
OFF
Operate || Next

Factory Test Mode
Test Rinse Fill Sol
ON
Operate || Next

Turn ON/OFF Detergent Pump:

Allows the operation of the Detergent Pump to be tested.

```
Factory Test Mode
Test Detergent Pump
OFF
Operate || Next
```

```
Factory Test Mode
Test Detergent Pump
OFF
Operate || Next
```

```
Factory Test Mode
Test Detergent Pump
ON
Operate || Next
```

Turn ON/OFF Rinse Aid Pump:

Allows the operation of the Rinse Aid Pump to be tested.

```
Factory Test Mode
Test Rinse Aid Pump
OFF
Operate || Next
```

```
Factory Test Mode
Test Rinse Aid Pump
OFF
Operate || Next
```

```
Factory Test Mode
Test Rinse Aid Pump
ON
Operate || Next
```

Turn ON/OFF Drain Pump (if activated):

Allows the operation of the Drain Pump to be tested (if activated).

```
Factory Test Mode
Test Drain Pump
OFF
Operate || Next
```

```
Factory Test Mode
Test Drain Pump
OFF
Operate || Next
```

```
Factory Test Mode
Test Drain Pump
ON
Operate || Next
```

User Configuration:

<u>DESCRIPTION</u>	<u>SCREEN SELECTION SCROLLING</u>	<u>SCREEN AFTER SELECTION</u>
	<pre>READY Wash: 120 seconds Idle R: 82.8°C W: 60.2°C</pre>	<pre>User Configuration System Time 19/05/1989 21:30:00 Edit Next</pre>

When the machine is first installed a PIN number is required to unlock the machine.

The machine will only do short cycles that are used by the Norris staff to ensure that the machine is working correctly.

To get a PIN number please contact Norris on 1800 703 567

(Note: PIN Numbers shown will not work)

```
User Configuration
System Unlock Status
LOCKED (demo mode)
Edit || Next
```

```
Norris Registration
Call 1800 803 567
Code: 123, Pin:
Serial: 123C4567890
```

```
Norris Registration
Call 1800 803 567
Code: 123, Pin: 000
Increment || Next
```

```
Norris Registration
Call 1800 803 567
Code: 123, Pin: 456
Increment || Next
```

```
Norris Registration
Call 1800 803 567
Code: 123, Pin: 456
Discard || Save
```

User Configuration
System Unlock Status
Unlocked
|| Next

Allows the user to prime the detergent pump
(Note: Pump does not automatically turn off)

User Configuration
Prime Detergent
OFF
Operate || Next

User Configuration
Prime Detergent
ON
Operate || Next

Allows the user to prime the rinse aid pump
(Note: Pump does not automatically turn off)

User Configuration
Prime Rinse Aid
OFF
Operate || Next

User Configuration
Prime Rinse Aid
ON
Operate || Next

Allows the user to adjust basic parameters

User Configuration
Adjust Parameters
Edit || Next

Allows the user to adjust the amount of detergent that is put into the wash chamber during the fill

By pressing B2 the time will go up in increments of 5 seconds to 90 then start back at 0.

User Configuration
Initial Detergent
Run Time: 30 sec
Increment || Next

Allows the user to adjust the amount of rinse aid that is put into the wash chamber during the fill

By pressing B2 the time will go up in increments of 5 seconds to 90 then start back at 0.

User Configuration
Initial Rinse Aid
Run Time: 0 sec
Increment || Next

Allows the user to adjust the amount of detergent used per cycle

By pressing B2 the time will go up in increments of 5 seconds to 90 then start back at 0.

User Configuration
Detergent Per Cycle
Run Time: 5 sec
Increment || Next

Allows the user to adjust the amount of rinse aid used per cycle

By pressing B2 the time will go up in increments of 5 seconds to 90 then start back at 0.

User Configuration
Rinse Aid Per Cycle
Run Time: 15 sec
Increment || Next

Allows the user to adjust the height that the drain pump starts

By pressing B2 the level will change, this value changes between machine types.

User Configuration
Wash Drain Level
Water Level: 100 mm
Increment || Next

Allows the user to enable or disable the clean on shutdown feature

We recommend this feature stay enabled.

User Configuration
Clean on Shutdown
Enabled
Increment || Next

Allows the user to adjust the wash tank temp between 50-75°C

By pressing B2 the temperature will scroll between 55°C & 70°C

User Configuration
Wash Temperature
Temperature: 62 °C
Increment || Next

Allows the user to adjust the rinse temp between 82-88°C

By pressing B2 the temperature will scroll between 82 & 88°C

User Configuration
Rinse Temperature
Temperature: 85 °C
Increment || Next

Machine Info:

DESCRIPTION	SCREEN SELECTION SCROLLING	SCREEN AFTER SELECTION
	READY Wash: 120 seconds Idle R: 82.8°C W: 60.2°C	System Information System Time 19/05/1989 21:30:00 Exit Next
	Machine Serial Number, used for identification of the machine, also required for requesting warranty work & machine unlocking.	System Information Serial Number 12304567890 Exit Next
		System Information Wash Count 0 Exit Next
		System Information Last Drain Time 01/01/01 00:00:00 Exit Next

How long the machine has been turned "ON" for

```
System Information
Hours of Operation
0
Exit || Next
```

```
System Information
Activation Date
01/01/01 00:0:00
Exit || Next
```

Identifies the Firmware version install on the machine

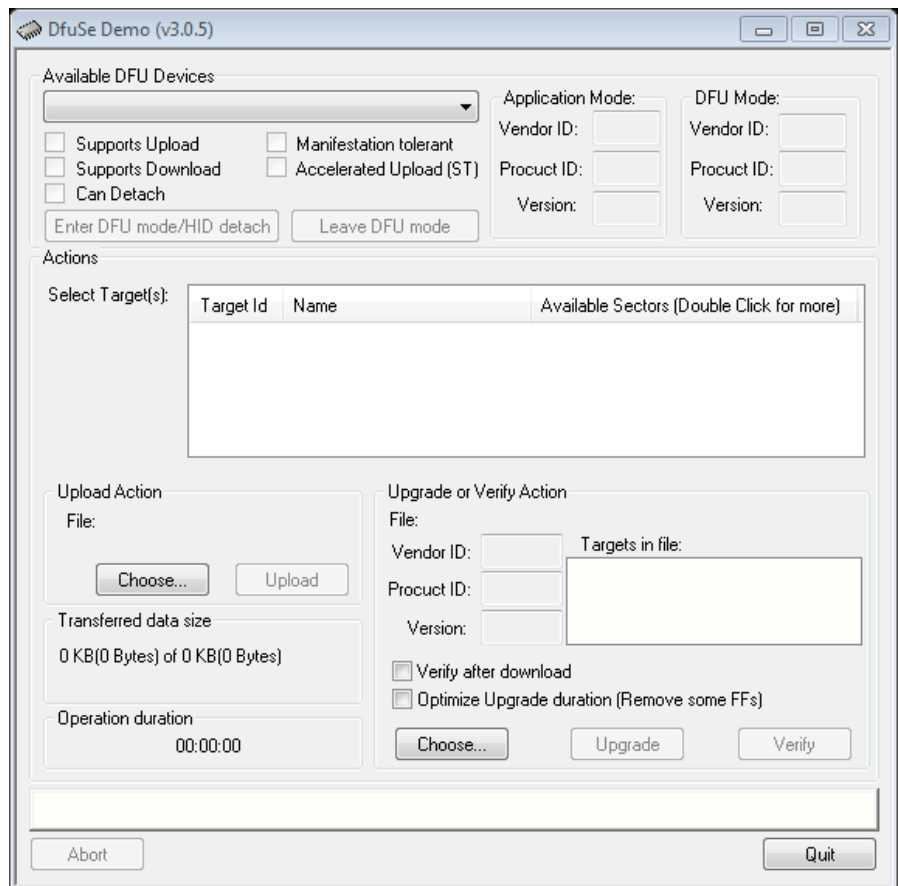
```
System Information
Firmware Version
V1.00
Exit || Next
```

Upgrading Boards Firmware:

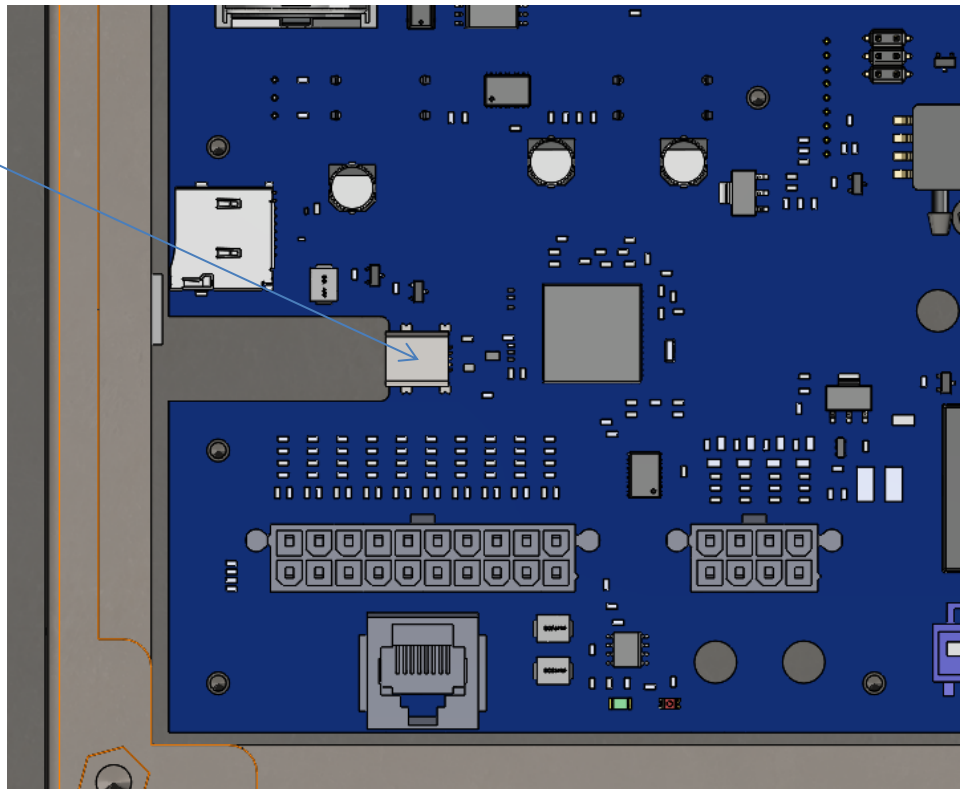
Install DfuSe Demo on the device you wish to do the program updates from.

Please contact Norris for the installation files for this software.

It currently only works on windows devices.



Insert USB Micro B cable into the Micro B insert on the control board.



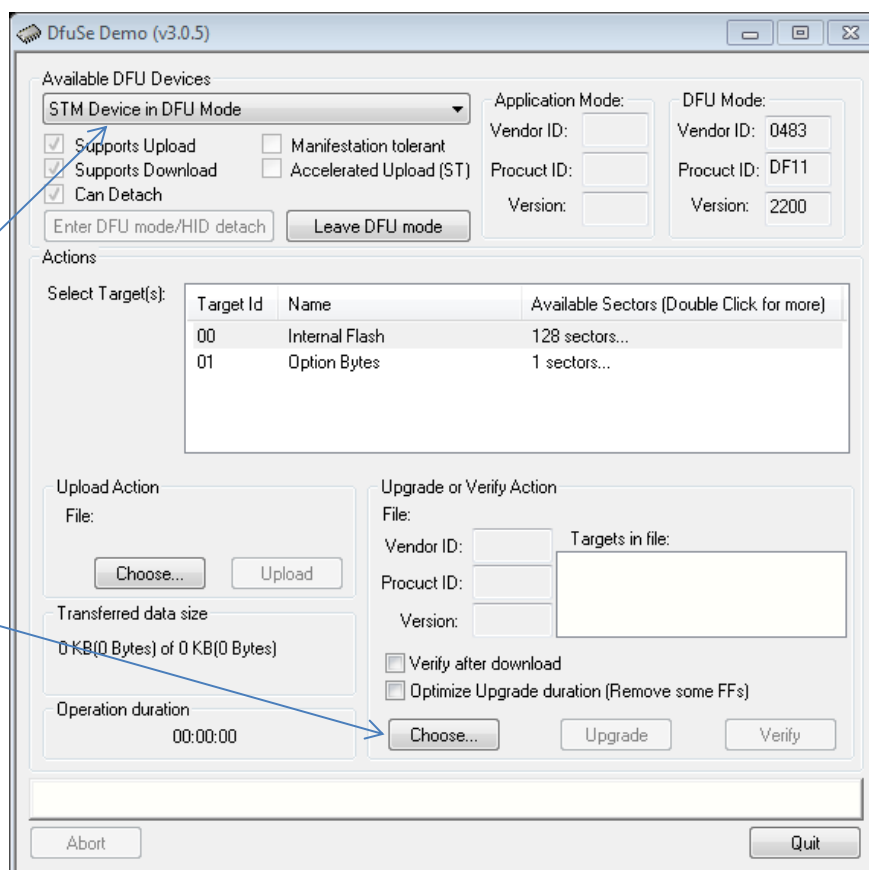
While pressing the POWER button the board, plug the other end of the USB cable into either a PC or Laptop (windows only), if this is the first time connecting to a Norris AWC Board insure that you have internet connection as it will require to download the appropriate drivers to connect correctly.



After plugging in the USB cable, release the power button, your PC/Laptop it should displace USB Device is Unrecognisable (this is normal).

Once the board has connected (this may take a few minutes for the first connection) it will appear in the available DFU Devices in the top dropdown box.

Once this has appeared select the choose button, and select the Norris Washer V*.**.dfu file

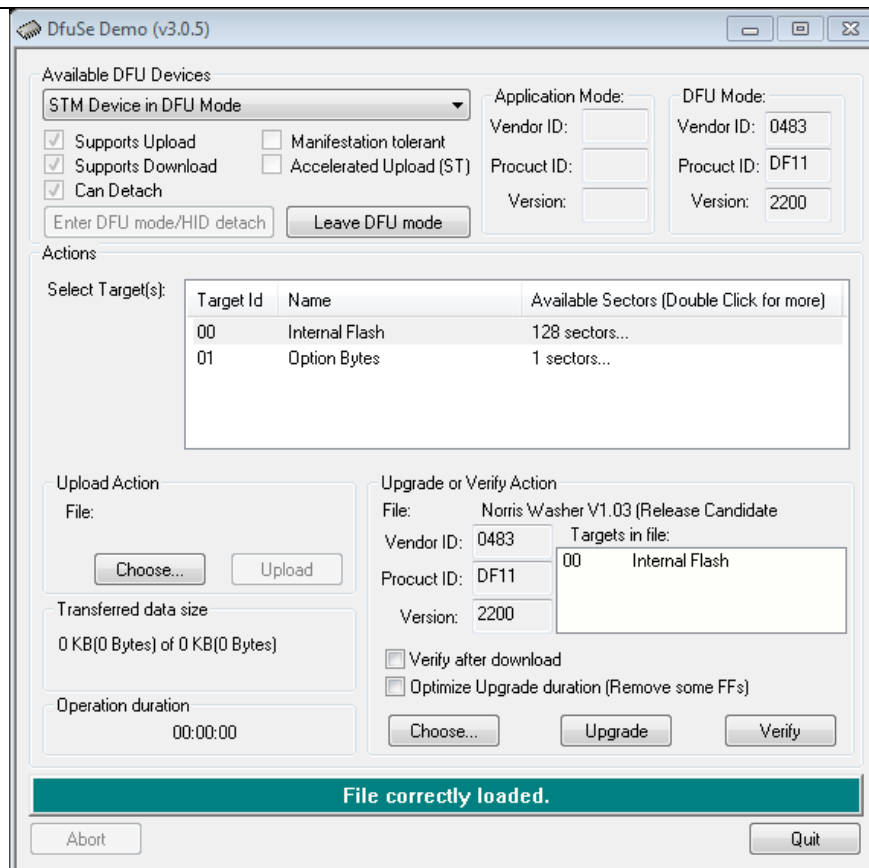


It will display that the file is

correctly loaded, once this appears, click on the “Upgrade” button; it will come up with a message asking if you want to continue, click YES.

Once you have clicked yes it should take around 15 seconds to complete the update.

Once it has completed unplug the control board, resecure the board cover gasket and plate.



Before turning the machine back ON, press and hold the Cycle (B2) & Start (B3) Button’s for 5 seconds to entre system configuration, and select operate on Apply Default Params (cycle button (B2))

System Configuration
Apply Default Params

Operate || Next

Also re-zero the water level sensors, **(please ensure that both the Rinse & Wash tanks are empty before doing this)**

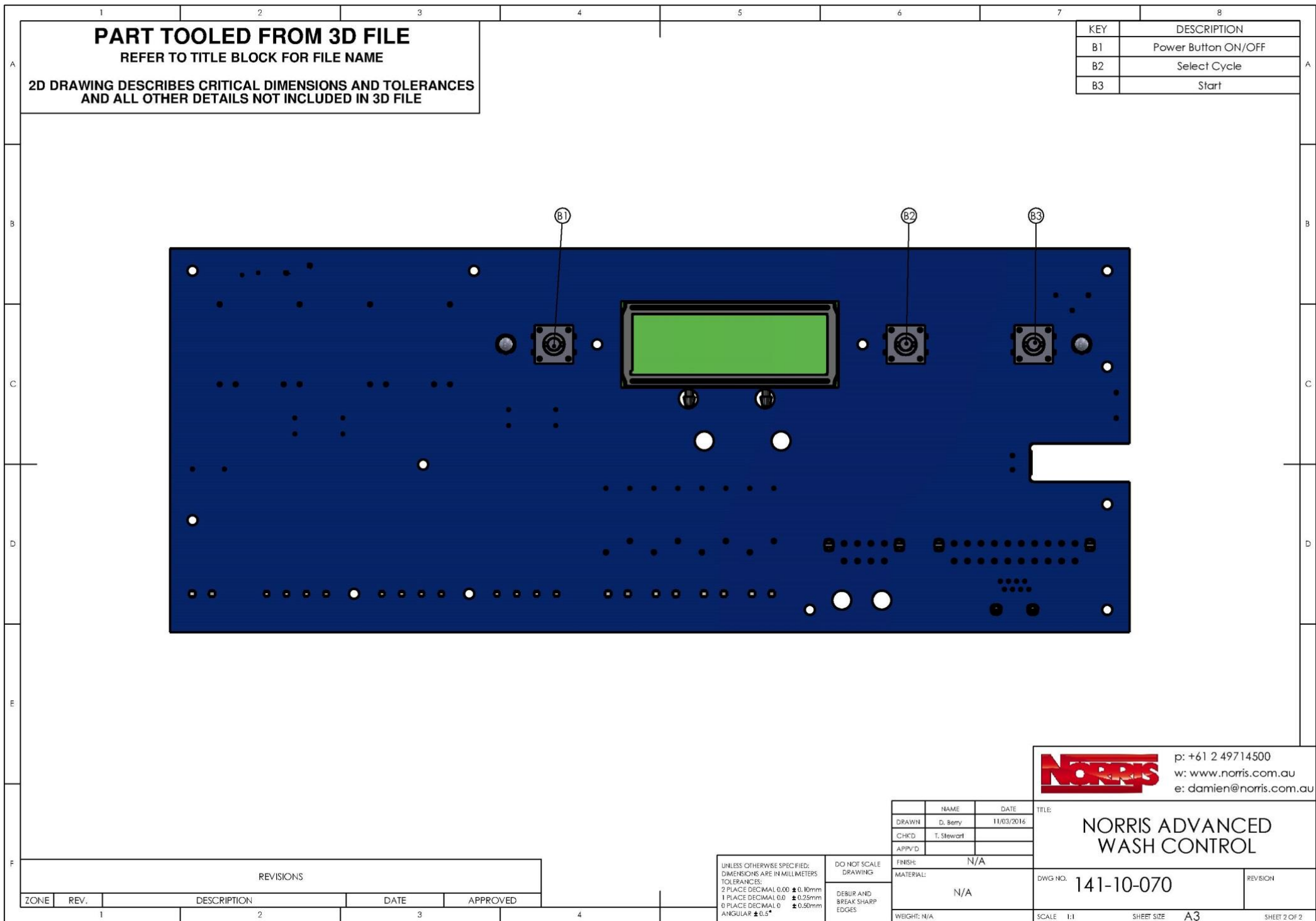
System Configuration
Zero Water Levels

Operate || Next

Once the default params have been applied and level sensors zeroed, press and hold the Cycle (B2) & Start (B3) for 5 seconds to turn the machine back OFF.

Updates complete turn the machine on.

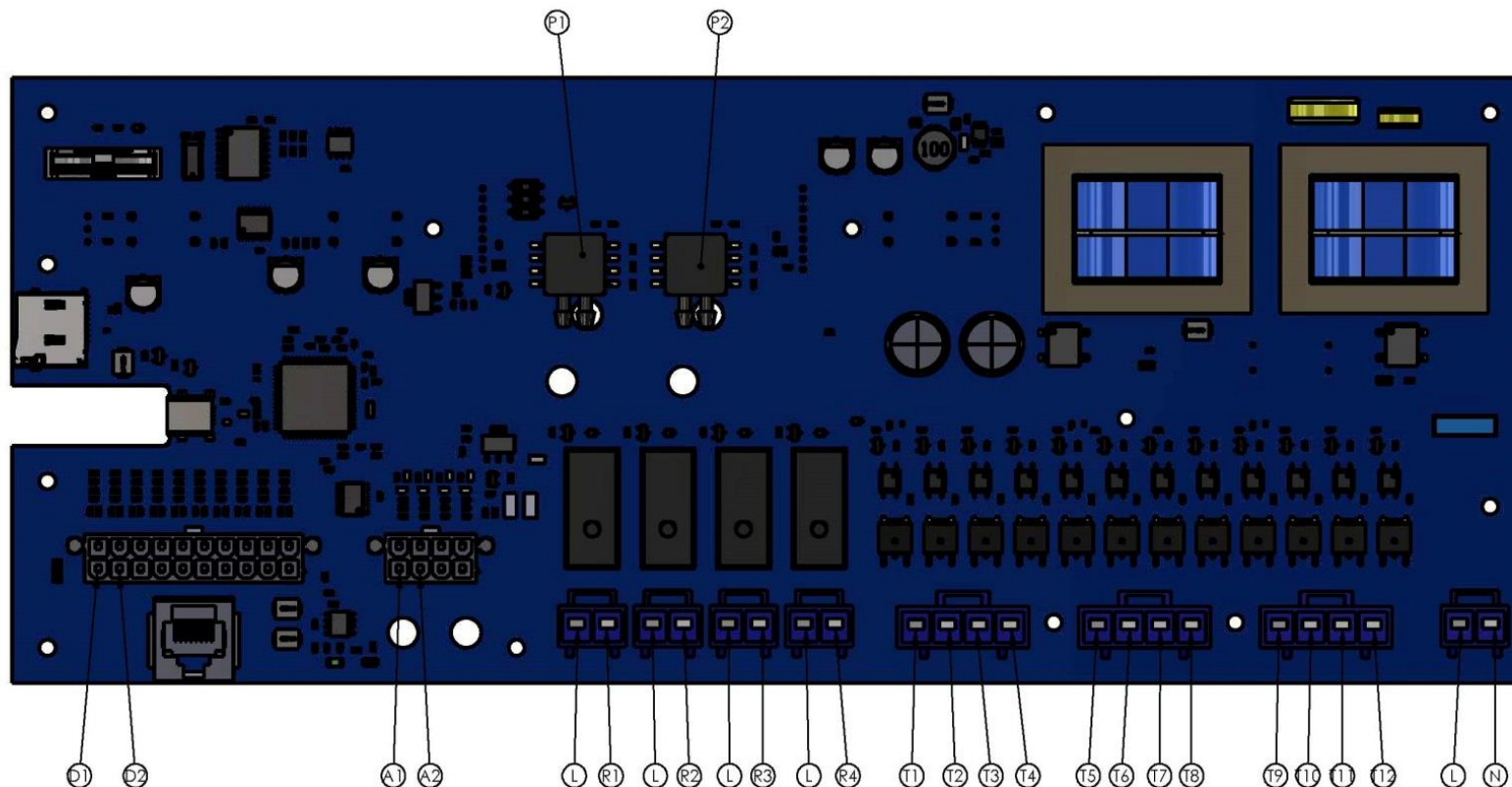




REFER TO TITLE BLOCK FOR FILE NAME

2D DRAWING DESCRIBES CRITICAL DIMENSIONS AND TOLERANCES
AND ALL OTHER DETAILS NOT INCLUDED IN 3D FILE

KEY	DESCRIPTION
T1	Main Contactor/Relay
T2	Rinse Tank Elements
T3	Wash Tank Elements
T4	Wash Pump
T5	Solenoid HOT
T6	Solenoid COLD
T7	Detergent Pump
T8	Rinse Aid Pump
T9	Drain Pump
T10	N/A
T11	N/A
T12	N/A
R1	Rinse Pump 0.5HP
R2	Wash Pump 0.5HP
R3	Wash Tank 500w
R4	N/A
D1	Main Contactor/Relay
D2	Hood/Door Switch
A1	Rinse Tank Probe
A2	Wash Tank Probe
P1	Rinse Tank Pressure Switch
P2	Wash Tank Pressure Switch
L	Live Power
N	Neutral



	NAME	DATE
DRAWN	D. Berry	11/03/2011
CHKD	T. Stewart	
APPV'D		
FINISH:	N/A	
MATERIAL:	N/A	
WEIGHT:	N/A	



p: +61 2 49714500
w: www.norris.com.au
e: damien@norris.com.au

	TITLE
1	
2	
3	
4	
5	
6	
7	
8	
9	
10	
11	
12	
13	
14	
15	
16	
17	
18	
19	
20	
21	
22	
23	
24	
25	
26	
27	
28	
29	
30	
31	
32	
33	
34	
35	
36	
37	
38	
39	
40	
41	
42	
43	
44	
45	
46	
47	
48	
49	
50	
51	
52	
53	
54	
55	
56	
57	
58	
59	
60	
61	
62	
63	
64	
65	
66	
67	
68	
69	
70	
71	
72	
73	
74	
75	
76	
77	
78	
79	
80	
81	
82	
83	
84	
85	
86	
87	
88	
89	
90	
91	
92	
93	
94	
95	
96	
97	
98	
99	
100	

NORRIS ADVANCED
WASH CONTROL

DWG NO.	141-10-070
---------	------------

REVISION

SCALE	1:1	SHEET SIZE	A3
-------	-----	------------	----

SHEET 1 OF 2

REVISIONS				
ZONE	REV.	DESCRIPTION	DATE	APPROVED

UNLESS OTHERWISE SPECIFIED;
DIMENSIONS ARE IN MILLIMETERS
TOLERANCES:
2 PLACE DECIMAL 0.00 \pm 0.10mm
1 PLACE DECIMAL 0.0 \pm 0.25mm
0 PLACE DECIMAL 0 \pm 0.50mm
ANGULAR \pm 0.5°

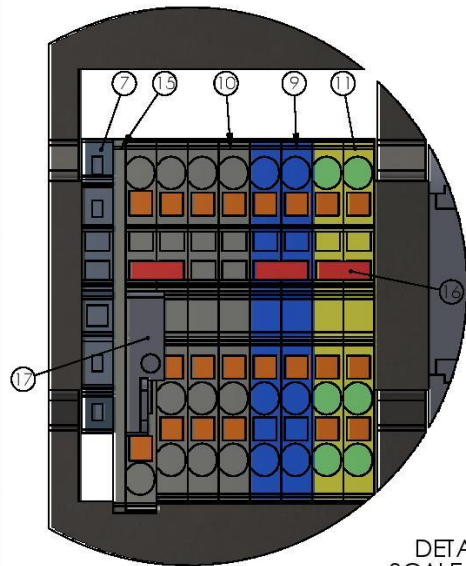
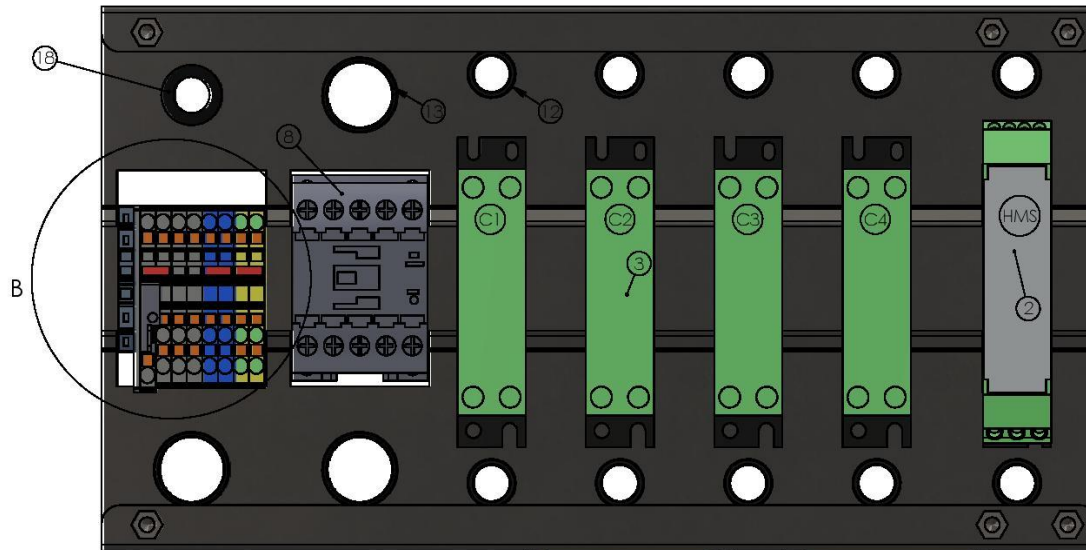
DO NOT SCALE
DRAWING

DEBUR AND
BREAK SHARP
EDGES

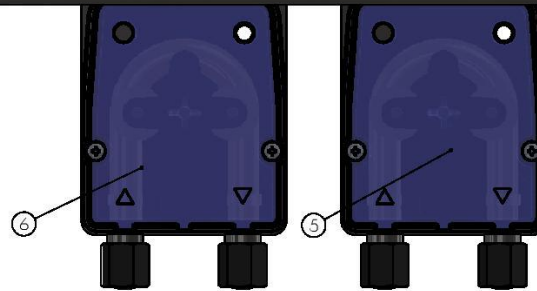
PART TOOLED FROM 3D FILE

REFER TO TITLE BLOCK FOR FILE NAME

2D DRAWING DESCRIBES CRITICAL DIMENSIONS AND TOLERANCES
AND ALL OTHER DETAILS NOT INCLUDED IN 3D FILE



DETAIL B
SCALE 2 : 1.7



ITEM NO.	PART NUMBER	DESCRIPTION	BT2000/QTY.
1	22-224	ELECTRICAL MOUNTING BOX	1
2	042-10-790	HYBRID MOTOR STARTER	1
3	042-10-791	SOLID STATE CONTACTOR 20AMP	5
4	117-10-025	NUTSERT SS M6 CLOSED END	6
5	136-17-085	DETERGENT PUMP	1
6	136-17-087	RINSE AID PUMP	1
7	168-10-793	CLIPFLEX 35-5 END STOP	1
8	046-10-301	CONTACTOR MOELLER DIL M9	1
9	168-10-795	PUSH IN TERMINAL TWIN - NEUTRAL	2
10	168-10-796	PUSH IN TERMINAL TWIN - ACTIVE	3
11	168-10-794	PUSH IN TERMINAL TWIN - EARTH	2
12	018-10-323	BUSH M16 NYL SNAP	10
13	018-66-130	BUSH M25.5 NYL SNAP	3
14	168-10-732	PT2.5-TG FUSE TERMINAL	1
15	168-10-797	TERMINAL END COVER DISCONNECT TYPE	1
16	168-10-798	FBS 2-5 2 POS JUMPER	3
17	168-10-731	FUSE PLUG WITH LED	1
18	075-10-646	Cable Glands M20X1.5	1



p: +61 2 49714500
w: www.norris.com.au
e: damien@norris.com.au

	NAME	DATE
DRAWN	D. Berry	04/09/2015
CHKD	T. Stewart	
APPVD		
FINISH:	N/A	
MATERIAL:	N/A	
WEIGHT:	2294.14	

UNLESS OTHERWISE SPECIFIED:
DIMENSIONS ARE IN MILLIMETERS
TOLERANCES:
2 PLACE DECIMAL 0.00 \pm 0.10mm
1 PLACE DECIMAL 0.0 \pm 0.25mm
0 PLACE DECIMAL 0 \pm 0.50mm
ANGULAR \pm 0.5°

DO NOT SCALE
DRAWING
DEBUR AND
BREAK SHARP
EDGES

TITLE:	BT2000 CONTROL BOX		
DWG NO.	UPRIGHT ELECT	REVISION	
SCALE	1:1.7	SHEET SIZE	A3
		SHEET 2 OF 3	

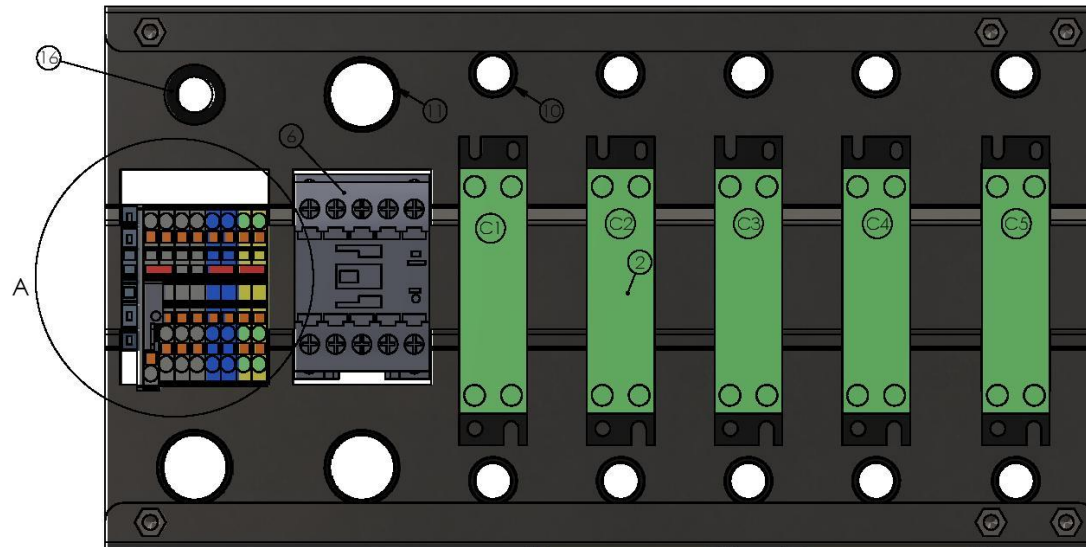
REVISIONS

ZONE	REV.	DESCRIPTION	DATE	APPROVED
------	------	-------------	------	----------

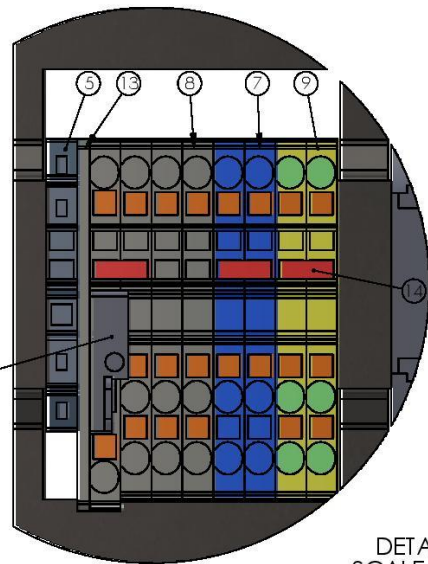
PART TOOLED FROM 3D FILE

REFER TO TITLE BLOCK FOR FILE NAME

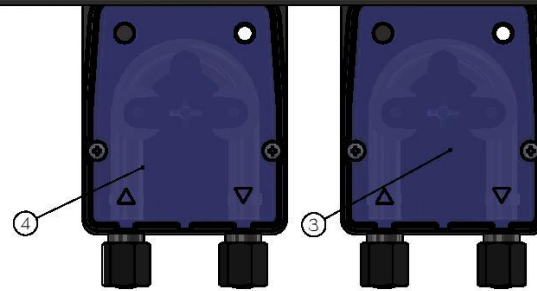
2D DRAWING DESCRIBES CRITICAL DIMENSIONS AND TOLERANCES
AND ALL OTHER DETAILS NOT INCLUDED IN 3D FILE



ITEM NO.	PART NUMBER	DESCRIPTION	Default/QTY.
1	22-224	ELECTRICAL MOUNTING BOX	1
2	042-10-791	SOLID STATE CONTACTOR 20AMP	5
3	136-17-085	DETERGENT PUMP	1
4	136-17-087	RINSE AID PUMP	1
5	168-10-793	CLIPFLEX 35-5 END STOP	1
6	046-10-301	CONTACTOR MOELLER DIL M9	1
7	168-10-795	PUSH IN TERMINAL TWIN - NEUTRAL	2
8	168-10-796	PUSH IN TERMINAL TWIN - ACTIVE	3
9	168-10-794	PUSH IN TERMINAL TWIN - EARTH	2
10	018-10-323	BUSH M16 NYL SNAP	10
11	018-66-130	BUSH M25.5 NYL SNAP	3
12	168-10-732	PT2.5-TG FUSE TERMINAL	1
13	168-10-797	TERMINAL END COVER DISCONNECT TYPE	1
14	168-10-798	FBS 2-5 2 POS JUMPER	3
15	168-10-731	FUSE PLUG WITH LED	1
16	075-10-646	Cable Glands M20X1.5	1



DETAIL A
SCALE 2: 1.7



How to convert 3phase BT700 to a single phase machine:

- Disconnect & remove wires from the Main Contactor (T1 & T2) to C1 (T1) & C2 (T1)
- L1 & board AC power are connected please do the following
 - Remove Wire from Main Contactor (T3), re-insert it to T1 on Main Contactor.
- Swap the T1 Wires on C2 & C3, this will allow the 3.6kW element to be used in the in the rinse tank.



p: +61 2 49714500
w: www.norris.com.au
e: damien@norris.com.au

NAME	DATE
DRAWN: D. Berry	04/09/2015
CHK'D: T. Stewart	
APP'D:	
FINISH:	N/A
MATERIAL:	N/A
WEIGHT: 2294.14	

TITLE:	BT700/3 ELECTRICAL BOX
DWG NO:	UPRIGHT ELECT
SCALE: 1:1.7	SHEET SIZE: A3
SHEET 1 OF 3	

ZONE	REV.	DESCRIPTION	DATE	APPROVED
1	2		3	4

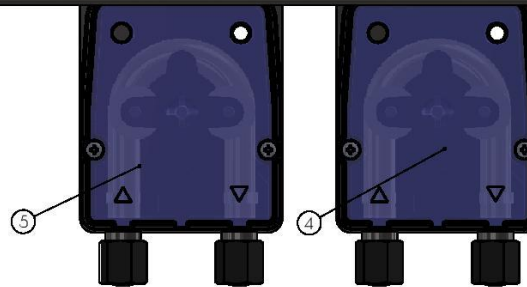
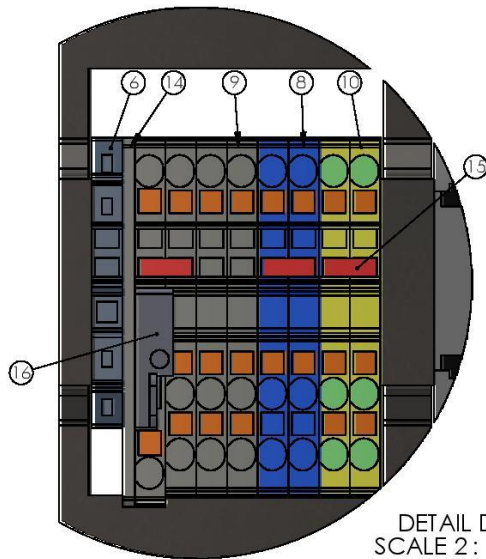
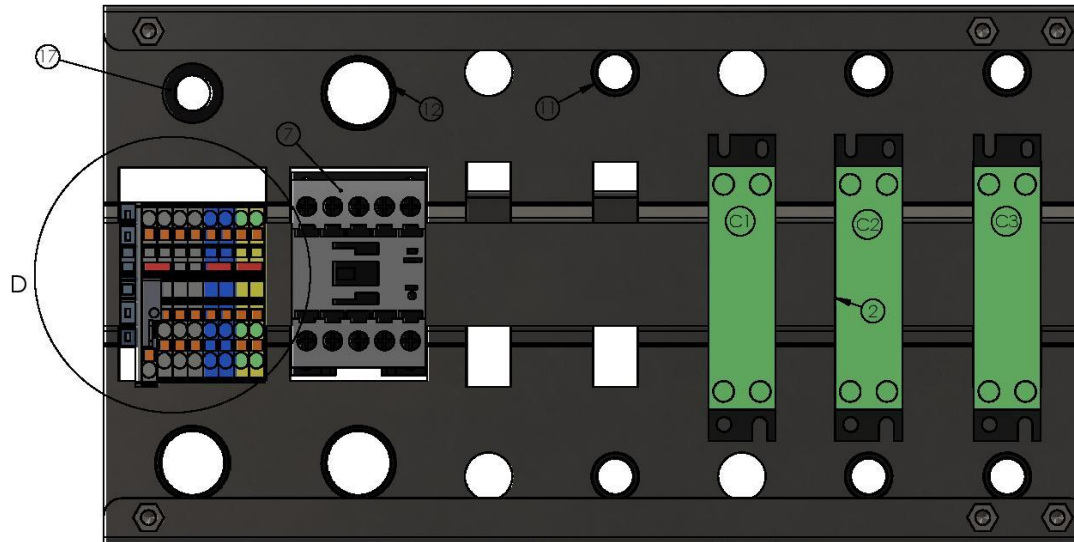
UNLESS OTHERWISE SPECIFIED:
DIMENSIONS ARE IN MILLIMETERS
TOLERANCES:
2 PLACE DECIMAL 0.00 ± 0.10mm
1 PLACE DECIMAL 0.0 ± 0.25mm
0 PLACE DECIMAL 0 ± 0.50mm
ANGULAR ± 0.5°

DO NOT SCALE
DRAWING
DEBUR AND
BREAK SHARP
EDGES

PART TOOLED FROM 3D FILE

REFER TO TITLE BLOCK FOR FILE NAME

2D DRAWING DESCRIBES CRITICAL DIMENSIONS AND TOLERANCES
AND ALL OTHER DETAILS NOT INCLUDED IN 3D FILE



ITEM NO.	PART NUMBER	DESCRIPTION	BT700 Mk1/QTY.
1	22-224	ELECTRICAL MOUNTING BOX	1
2	042-10-791	SOLID STATE CONTACTOR 20AMP	3
3	117-10-025	NUTSERT SS M6 CLOSED END	6
4	136-17-085	DETERGENT PUMP	1
5	136-17-087	RINSE AID PUMP	1
6	168-10-793	CLIPFLEX 35-5 END STOP	1
7	046-10-301	CONTACTOR MOELLER DIL M9	1
8	168-10-795	PUSH IN TERMINAL TWIN - NEUTRAL	2
9	168-10-796	PUSH IN TERMINAL TWIN - ACTIVE	3
10	168-10-794	PUSH IN TERMINAL TWIN - EARTH	2
11	018-10-323	BUSH M16 NYL SNAP	6
12	018-66-130	BUSH M25.5 NYL SNAP	3
13	168-10-732	PT2.5-TG FUSE TERMINAL	1
14	168-10-797	TERMINAL END COVER DISCONNECT TYPE	1
15	168-10-798	FBS 2-5 2 POS JUMPER	3
16	168-10-731	FUSE PLUG WITH LED	1
17	075-10-646	Cable Glands M20X1.5	1

NORRIS p: +61 2 49714500
w: www.norris.com.au
e: damien@norris.com.au

NAME	DATE	TITLE:
DRAWN: D. Berry	04/09/2015	BT700Mk1 & BT600 CONTROL BOX
CHKD: T. Stewart		
APPVD:		
FINISH:	N/A	
MATERIAL:	N/A	
WEIGHT: 2294.14	SCALE: 1:1.7	SHEET SIZE: A3
		REVISION:

UNLESS OTHERWISE SPECIFIED:
DIMENSIONS ARE IN MILLIMETERS
TOLERANCES:
2 PLACE DECIMAL 0.00 \pm 0.10mm
1 PLACE DECIMAL 0.0 \pm 0.25mm
0 PLACE DECIMAL 0 \pm 0.50mm
ANGULAR \pm 0.5°

DO NOT SCALE
DRAWING
DEBUR AND
BREAK SHARP
EDGES

REVISIONS

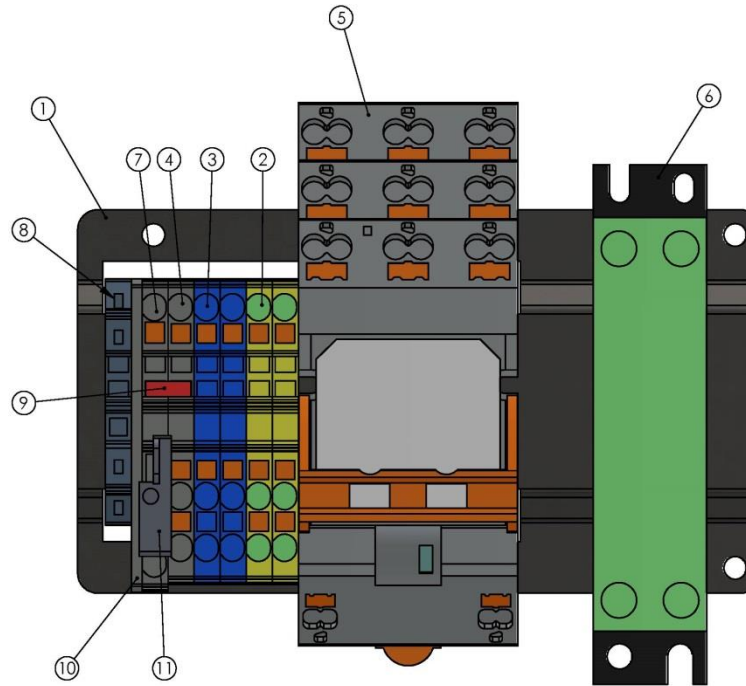
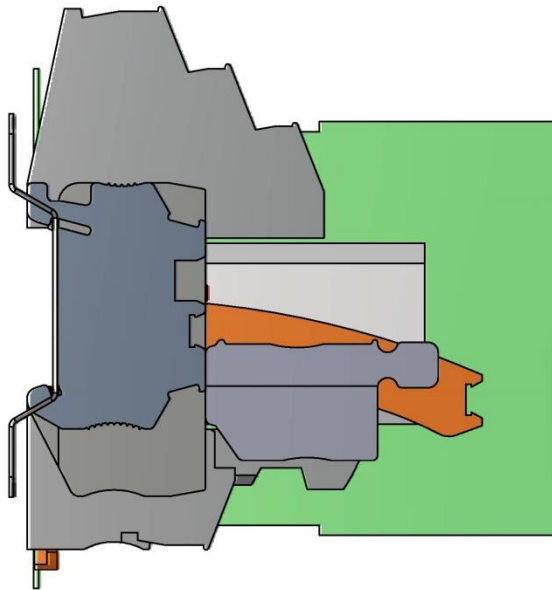
ZONE	REV.	DESCRIPTION	DATE	APPROVED
1	2	3	4	

PART TOOLED FROM 3D FILE

REFER TO TITLE BLOCK FOR FILE NAME

2D DRAWING DESCRIBES CRITICAL DIMENSIONS AND TOLERANCES
AND ALL OTHER DETAILS NOT INCLUDED IN 3D FILE

ITEM NO.	PART NUMBER	DESCRIPTION	QTY.
1	18-047	Electrical Mount	1
2	168-10-794	PUSH IN TERMINAL TWIN - EARTH	2
3	168-10-795	PUSH IN TERMINAL TWIN - NEUTRAL	2
4	168-10-796	PUSH IN TERMINAL TWIN - ACTIVE	1
5	142-10-792	MOTOR RELAY	1
6	042-10-791	SOLID STATE CONTACTOR 20AMP	1
7	168-10-732	PT2.5-TG FUSE TERMINAL	1
8	168-10-793	CLIPFLEX 35-5 END STOP	1
9	168-10-798	FBS 2-5 2 POS JUMPER	1
10	168-10-797	TERMINAL END COVER DISCONNECT TYPE	1
11	168-10-731	FUSE PLUG WITH LED	1



REVISIONS

ZONE	REV.	DESCRIPTION	DATE	APPROVED
1				
2				
3				
4				

UNLESS OTHERWISE SPECIFIED:
DIMENSIONS ARE IN MILLIMETERS
TOLERANCES:
2 PLACE DECIMAL 0.00 \pm 0.10mm
1 PLACE DECIMAL 0.0 \pm 0.25mm
0 PLACE DECIMAL 0 \pm 0.50mm
ANGULAR \pm 0.5°

DO NOT SCALE
DRAWING
DEBUR AND
BREAK SHARP
EDGES

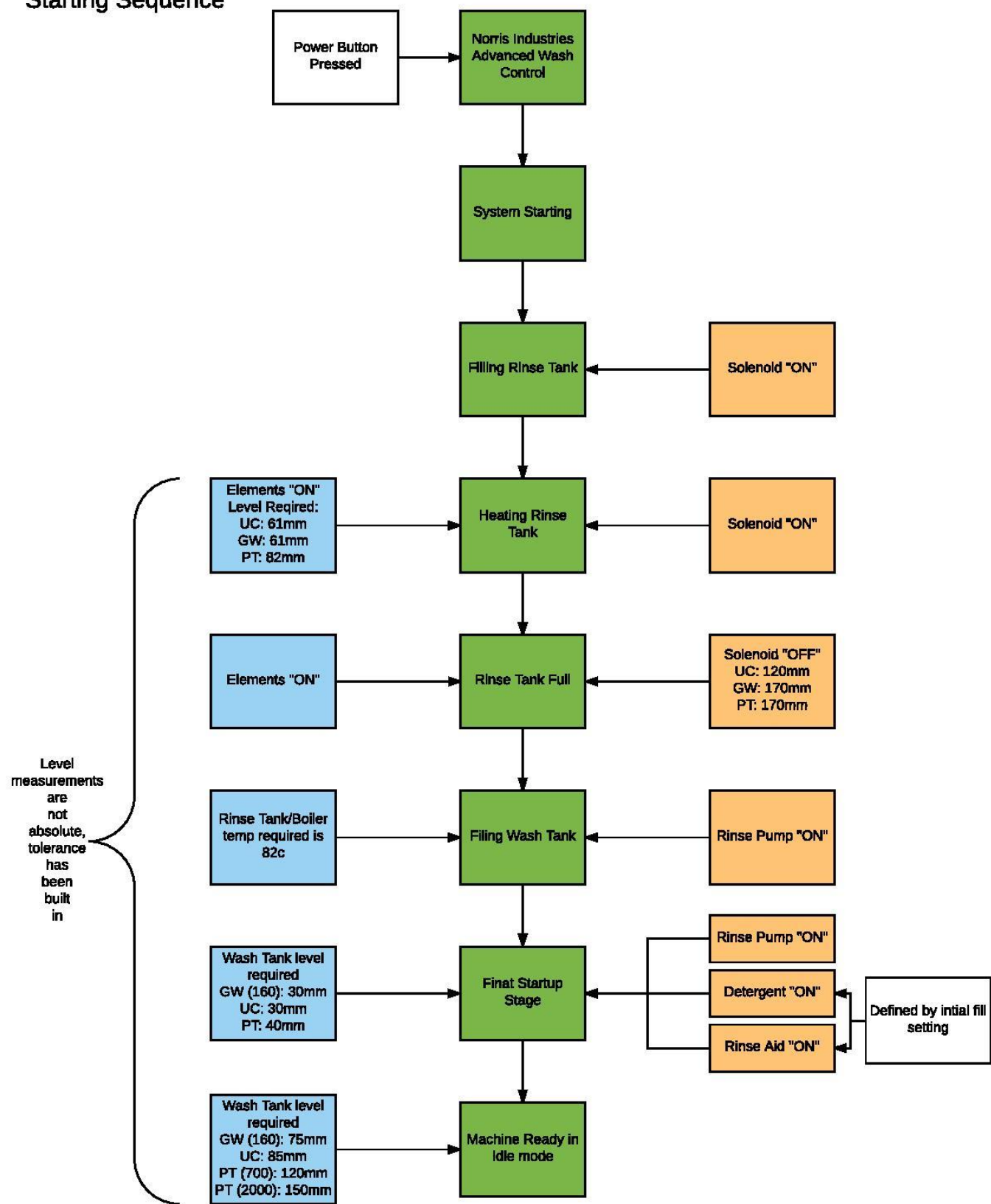
	NAME	DATE
DRAWN	D. Berry	22/08/2016
CHKD	T. Stewart	
APPVD		
FINISH:	N/A	
MATERIAL:	N/A	
WEIGHT:	525.98	



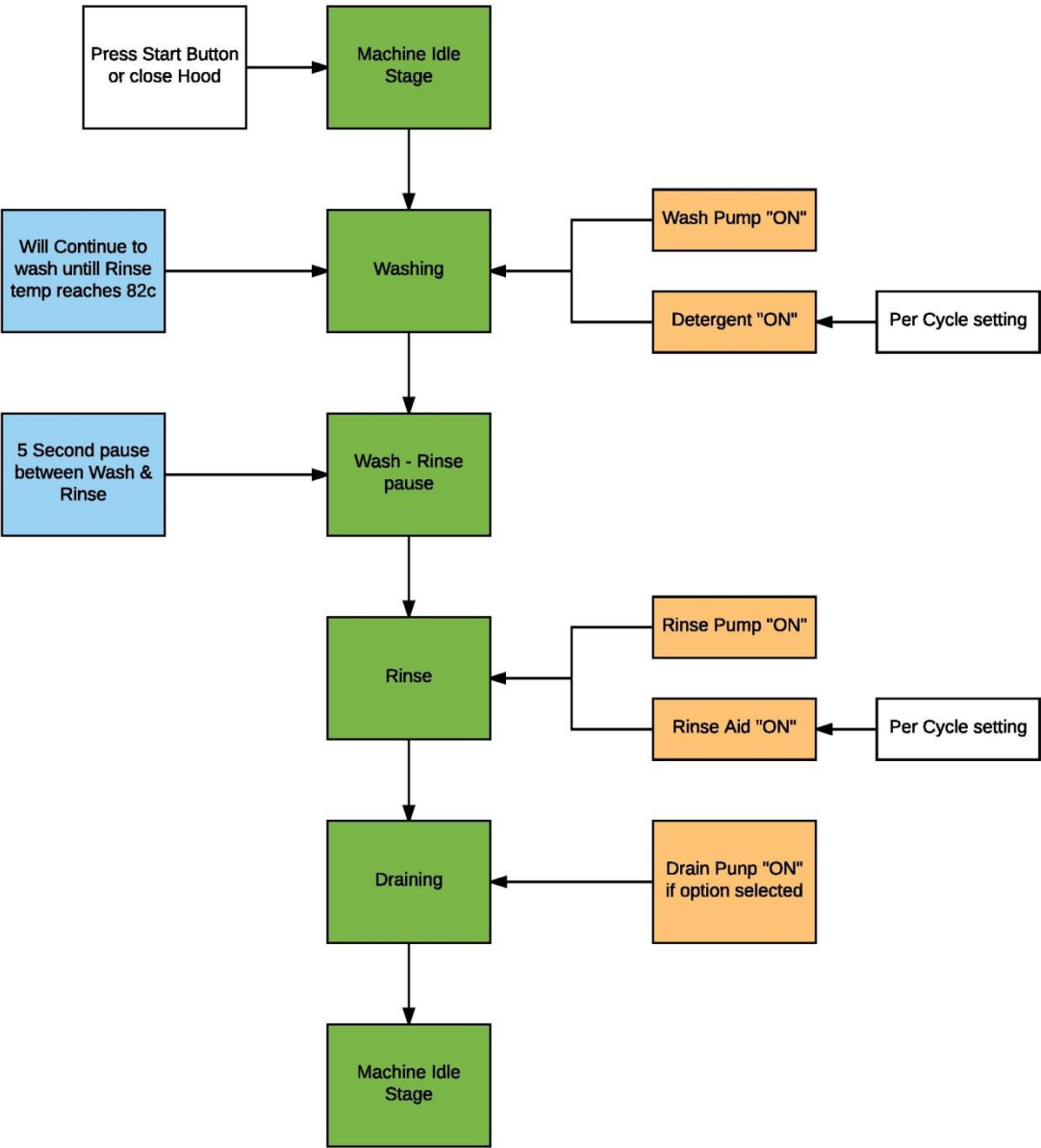
p: +61 2 49714500
w: www.norris.com.au
e: damien@norris.com.au

TITLE: Electrical Mount Assy		
DWG NO. Elect Mount	REVISION	
SCALE 1:1	SHEET SIZE A3	SHEET 1 OF 1

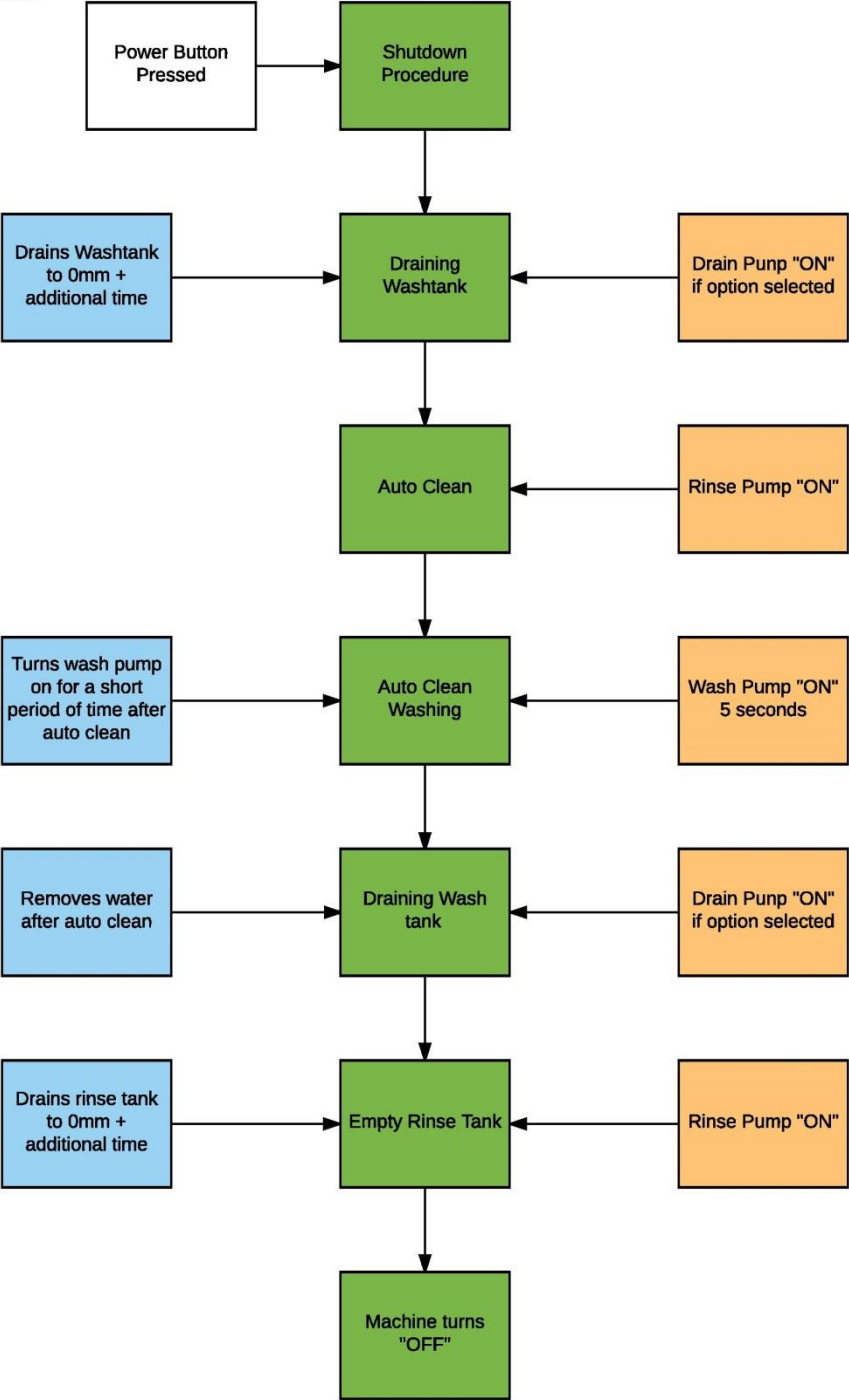
Starting Sequence



Cycle Sequence



Shutdown Sequence



KEY

NOTE:

DIRECT FAULT
NO ERROR

ERROR

COMPONENT
NOT WORKING

